



# CLME+ Project

Caribbean & North Brazil Shelf Large Marine Ecosystems

Virtual Project Steering Committee Meeting  
16-18 June 2020

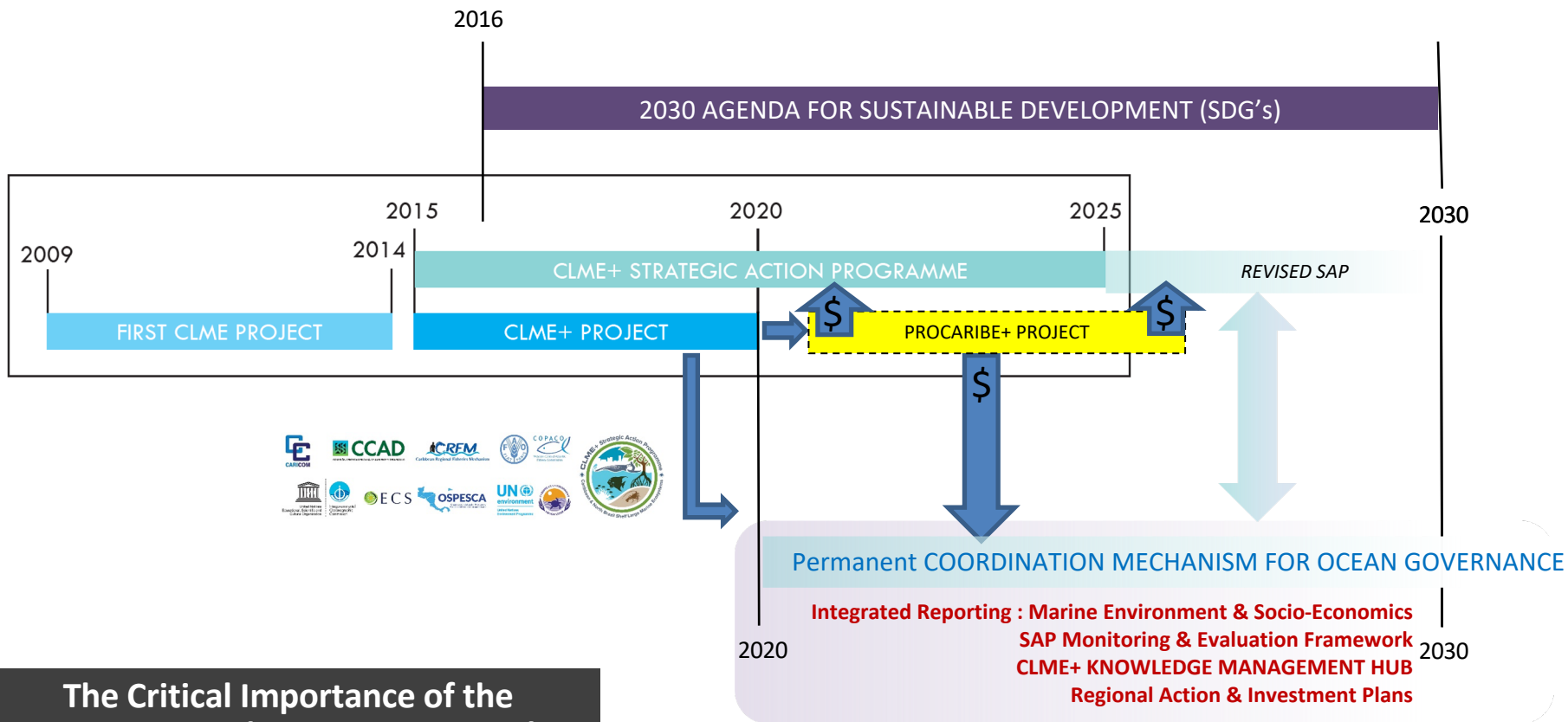


## *Towards the establishment of the Permanent Coordination Mechanism: process & timeline*

[info@clmeproject.org](mailto:info@clmeproject.org)

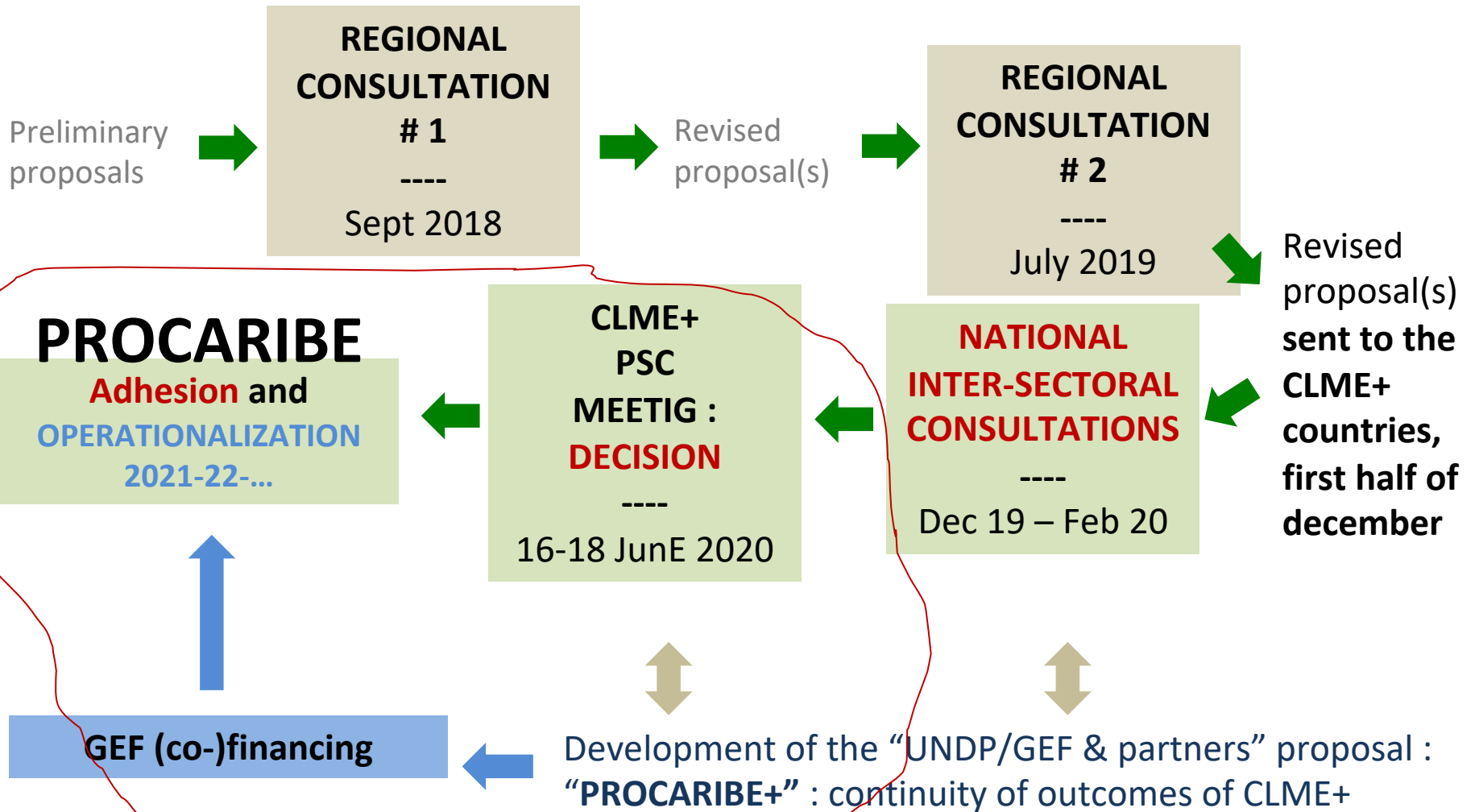
Catalizando la implementación del Programa de Acciones  
Estratégicas de los Grandes Ecosistemas Marinos  
del Caribe y de la Plataforma del Norte de Brasil





**The Critical Importance of the GEF-supported TDA-SAP approach for the Region and of the Coordination Mechanism**

# TOWARDS A PERMANENT COORDINATION MECHANISM

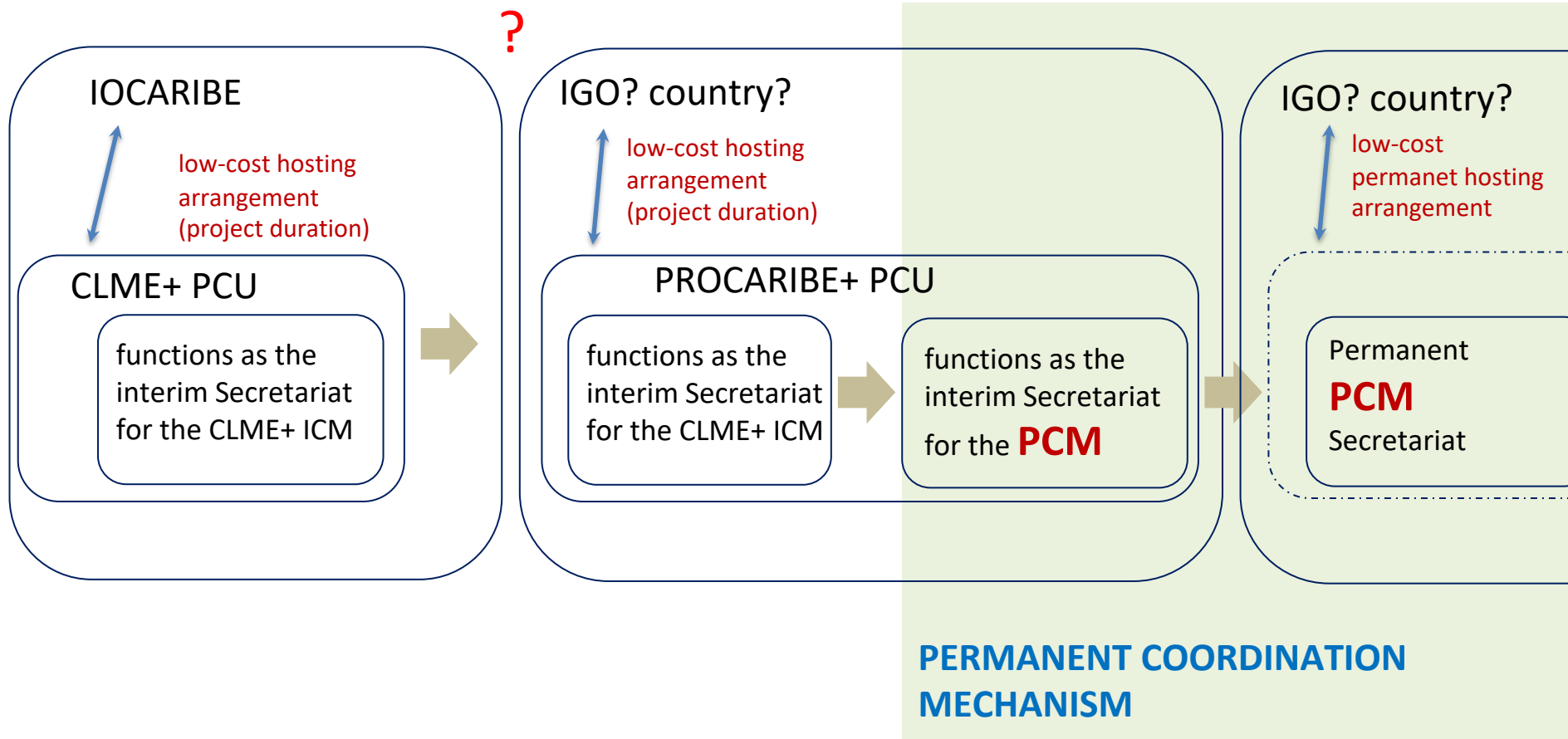


CLME+ PROJECT

PPG

PROCARIBE+ PROJECT

Post-PROJECT



Empowered lives.  
Resilient nations.

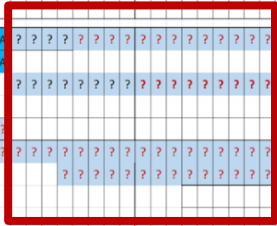
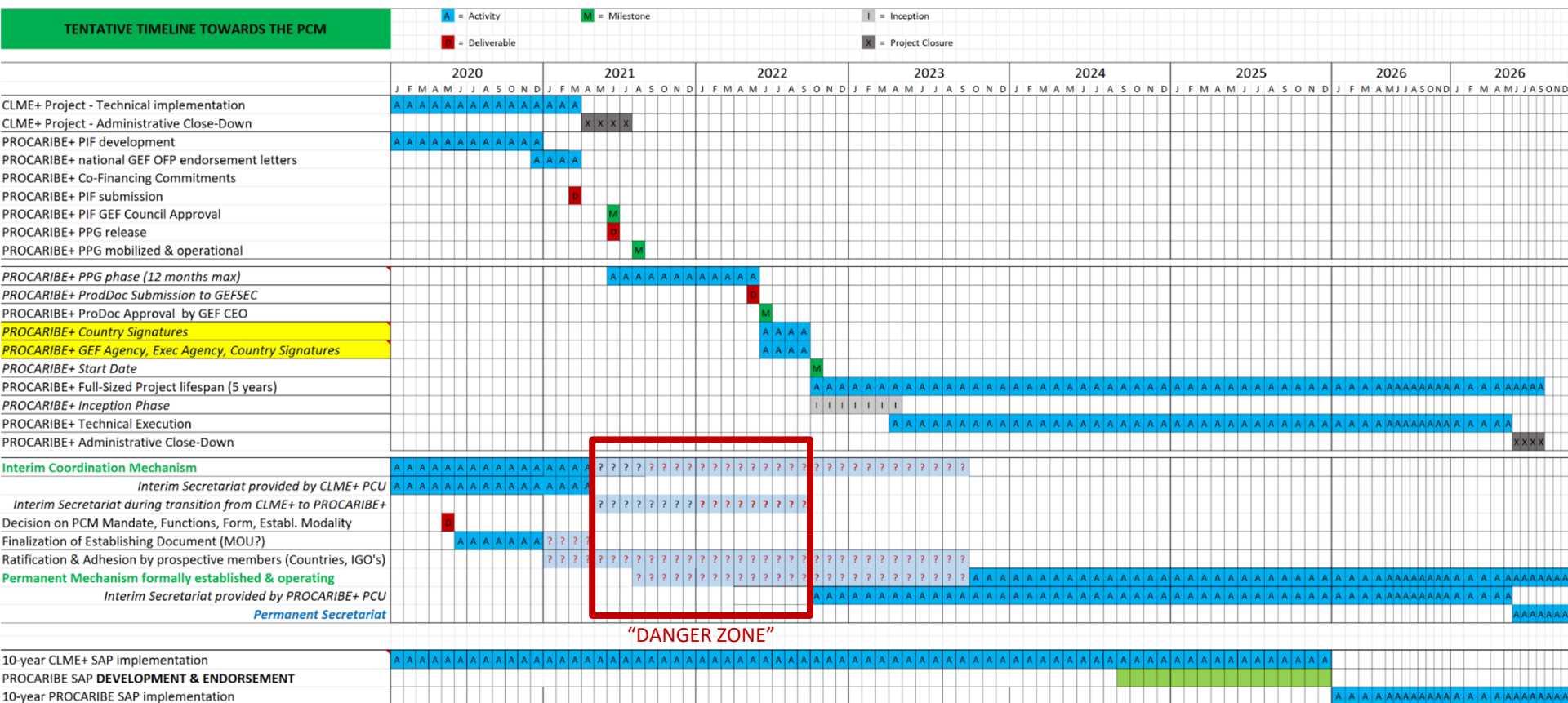


www.theGEF.org



## TENTATIVE TIMELINE :

- From **CLME+ Project** to “**PROCARIBE+**” Project
- From **Interim Mechanism** to **Permanent Mechanism**
- From **Interim Secretariat** to **Permanent Secretariat**



“DANGER ZONE”



**PRELIMINARY CALL FOR EXPRESSION OF INTEREST**  
**for countries and IGO's**

**to host**  
**the Permanent Coordination Mechanism Secretariat**

**(request to fill in form)**

*until now:*

**1 EXPRESSION OF INTEREST - GOVERNMENT OF HONDURAS**



Empowered lives.  
Resilient nations.



[www.theGEF.org](http://www.theGEF.org)

