

STRENGTHENING OCEAN GOVERNANCE IN THE CLME+ REGION

Options for Improved Policy Coordination
and Sustainable Financing

Catalyzing implementation of the
Strategic Action Programme for the Caribbean and
North Brazil Shelf LMEs (2015-2020)



Empowered lives.
Resilient nations.



www.theGEF.org



ACKNOWLEDGMENTS:

Development of this Information Product and its contents, and/or the activities leading thereto, have benefited from the financial support of the UNDP/GEF Project “Catalysing Implementation of the Strategic Action Programme (SAP) for the Sustainable Management of shared Living Marine Resources in the Caribbean and North Brazil Shelf Large Marine Ecosystems” (CLME+ Project, 2015-2020).

The CLME+ Project is executed by the United Nations Office for Project Services (UNOPS) in close collaboration with a large number of global, regional and national-level partners. All are jointly referred to as the “CLME+ Project co-executing partners”.

www.clmeproject.org

May 2018

PHOTO CREDIT:

All photos by Juan Vega, except page 9 (left and bottom; Adobe Stock).

DISCLAIMER:

The designations employed and the presentation of information in any format in this Information Product do not imply the expression of any opinion whatsoever on the part of the GEF, UNDP and/or any of the CLME+ Project co-executing partners concerning the legal status of any country, territory, city or area or of its authorities, or concerning the delimitation of its frontiers or boundaries. The mention of specific companies or of certain manufacturers’ products does not imply that they are endorsed or recommended by the GEF, UNDP and/or any of the CLME+ Project co-executing partners in preference to others of a similar nature that are not mentioned.

Unless expressly stated otherwise, the content, facts, findings, interpretations, conclusions, views and opinions expressed in this Information Product are those of the Author(s), and publication as a CLME+ Project Information Product does not by itself constitute an endorsement of the GEF, UNDP and/or any of the CLME+ Project co-executing partners other than the Author(s) of such content, facts, findings, interpretations, conclusions, views or opinions.

The GEF, UNDP and/or any of the CLME+ Project co-executing partners other than the Author(s) do not warrant that the information contained in this Information Product is complete and correct and shall not be liable whatsoever for any damages incurred as a result of its use.

INTRODUCTION

“**T**

his brochure presents the background, objective and methodology of the consultancy **Options for a Permanent Policy Coordination Mechanism and a Sustainable Financing Plan for Ocean Governance in the CLME+ Region**, which is being implemented between November 2017 and April 2020.

It emphasizes on the importance and benefits of a Permanent Policy Coordination Mechanism and Sustainable Financing Plan for all stakeholders of the CLME+ region. The information provided in this brochure aims to raise awareness and provide information for meaningful participation in strengthening ocean governance in the CLME+ region.

””

KEY TERMS AND ACRONYMS

Ocean Governance: The principles, processes, rules and institutions that guide how we manage and use our oceans. Ocean governance spans public and private spheres, multiple levels (from the local to the global) and all relevant sectors.

RGF – Regional Governance Framework: The entire set of ocean governance issues, the organisations with responsibility for ocean governance, their policy processes and the interactions among them.

PPCM – Permanent Policy Coordination Mechanism: A regional mechanism through which various parties with a mandate for ocean governance cooperate to improve the synergy, efficiency and impact of their actions

SFP – Sustainable Financing Plan: A plan that helps to determine the funding requirements of an organisation (in terms of amount and timing) and to identify income sources for the different needs (such as institutional costs and programme budgets).

Blue Economy: An economy that is based on ocean resources while ensuring a sustainable resource use and conservation. The Blue Economy is also referred to as a sustainable ocean-based economy.







The CLME+ region encompasses the Caribbean Large Marine Ecosystem (CLME) and the North Brazil Shelf Large Marine Ecosystem (NBSLME). It lies on a vast marine area of 4.4 million km², consisting of over 35 Independent States and Territories. It is a region of unique cultural and historical value, a consequence of its precolonial and colonial history, and of the indigenous, African, Asian and European roots of its current population. The vast expanse of marine environment in the CLME+ supports a multitude of globally important economic activities and ecological processes.



THE CLME+ REGION

One of the geopolitically most diverse and complex sets of LMEs in the world

The region's geopolitical reality is strongly influenced by its high diversity in terms of historical backgrounds, cultures, languages, country and population size, political systems and governance arrangements.

Ranging from among the largest to the smallest, and from among the most developed to the least developed countries in the world, there are:

26

independent
states

18

dependent/associated
territories

28

small island
developing states

The region has high and globally significant levels of biodiversity:



12,046 marine species
(1,400 species of fish)



34 marine mammal
species



1/4 of the global spe-
cies inhabit or periodi-
cally pass through the
Caribbean Sea

THE CLME+ REGION: SUPPORTING LIVELIHOODS

The CLME+ region is the most urbanized region in the developing world, with close to 80% of its population living in cities. About 116 million people live within 100 km of the coast, and nearly three-quarters of the population in coastal zones. They are highly dependent on the goods and services provided by the marine ecosystems.

Key economic activities in CLME+ countries include tourism, mining and oil & gas extraction, and fishing.



More than 25 million
stay-over visitors an-
nually



Venezuela, Mexico, and
Trinidad and Tobago,
largest oil exporters



900,000 employed
directly in fishery
USD 1.2 billion annually
in export earnings



MAJOR THREATS TO THE CLME+ REGION

UNSUSTAINABLE FISHING



Total fishery catch by CLME countries in FAO Area 31 has reduced from about 1.79m tonnes (1990s) to 1.25m tonnes (2010). In the NBSLME, around 30% of the fish stocks are overexploited or have collapsed as a result of overfishing.

ECOSYSTEM DEGRADATION

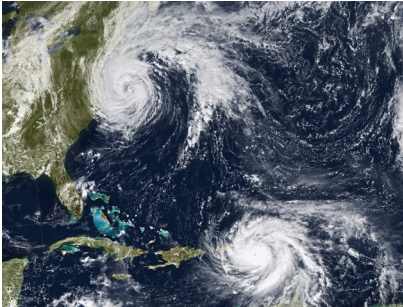


Live coral cover has already declined by as much as 80% in many areas of Caribbean reefs over the last two decades. Mangrove areas in the region have declined by 1% per year since 1980.

MARINE POLLUTION



Up to 80% of sewage reaches the Caribbean Sea untreated or only partially treated. Ships in the Caribbean are estimated to produce more than 70,000 tonnes of waste water per year.



CLIMATE CHANGE

Increasing sea temperature, sea level rise and more frequent extreme weather events are already felt across the region, with severe consequences on environmental health and human well-being.





A STRATEGIC ACTION PROGRAMME FOR THE REGION

While there is a high level of diversity and geopolitical fragmentation in the CLME+ region, the marine ecosystems and resources are trans-boundary in nature. The threats and challenges that affect the region cannot be solved by individual countries alone, but only in a coordinated manner.

The CLME+ Strategic Action Programme (SAP) arose from the recognition of the overall lack of coordination efforts leading to marine ecosystem degradation and resource depletion in the region. The SAP has been politically endorsed by over 30 government ministers representing 25 countries and 6 overseas territories in the CLME+ region. It provides a 10-year roadmap that helps countries to expand capaci-

ties and knowledge, and strengthen the frameworks and arrangements for region-wide cooperation, coordination and decision-making.



The SAP supports countries also in achieving the Sustainable Development Goals, particularly SDG 14 to conserve and sustainably use the oceans, seas and marine resources for sustainable development.



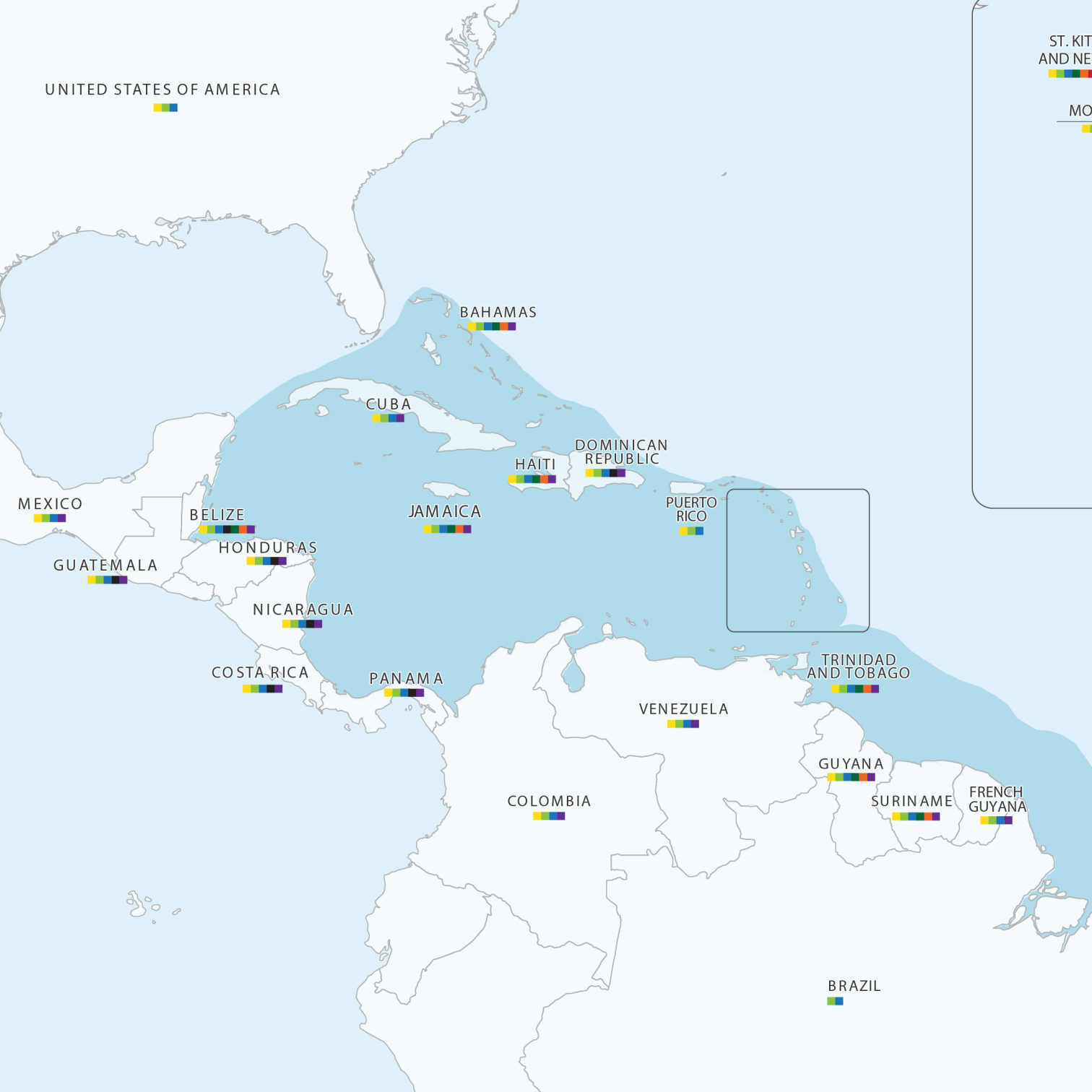
INTERIM COORDINATING MECHANISMS

In order to coordinate the implementation of the SAP and to enhance wider regional cooperation, an Interim Coordination Mechanism (ICM) was created through a Memorandum of Understanding between eight Intergovernmental Organisations (IGOs), representing all CLME+ countries with overlapping memberships.

- > **UN Environment CEP** - Caribbean Environment Programme
- > **WECAFC** - Western Central Atlantic Fishery Commission of FAO
- > **IOCARIBE** - Intergovernmental Oceanographic Commission of UNESCO Sub-Commission for the Caribbean and Adjacent Regions
- > **OSPESCA** - Organisation of the Fisheries and Aquaculture Sector of the Central American Isthmus
- > **CCAD** - Central American Commission on Environment and Development
- > **CRFM** - Caribbean Regional Fisheries Mechanism
- > **CARICOM** - Caribbean Community, represented by its Secretariat
- > **OECS** - Organisation of Eastern Caribbean States, represented by the OECS Commission

The CLME+ Project Coordination Unit (PCU) provides Secretariat services for the ICM. Besides the ICM members, there are other regional organisations with a mandate for Ocean Governance in the region, such as the Caribbean Sea Commission of the Association of Caribbean States (ACS/CSC).

WECAFC, OSPESCA and CRFM as Fisheries IGOs have also created a particular Interim Coordination Mechanism on sector-specific issues.



UNITED STATES OF AMERICA



ST. KIT
AND NE



MO



MEXICO



GUATEMALA



BELIZE



HONDURAS



NICARAGUA



COSTA RICA



PANAMA



BAHAMAS



CUBA



JAMAICA



HAITI



DOMINICAN
REPUBLIC



PUERTO
RICO



VENEZUELA



TRINIDAD
AND TOBAGO



GUYANA



SURINAME

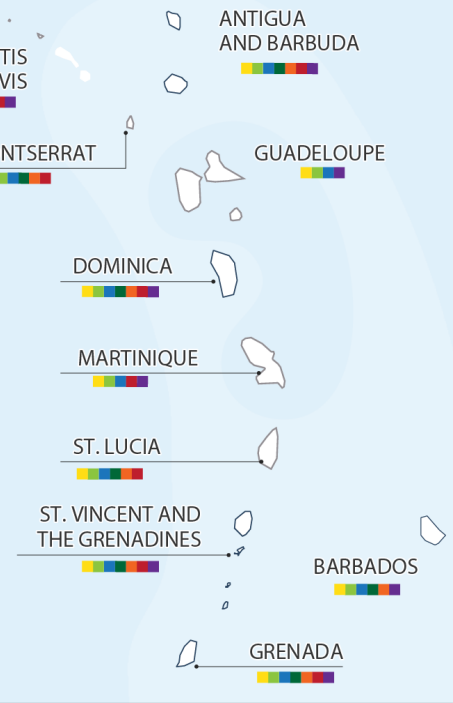


FRENCH
GUYANA



BRAZIL





INTERGOVERNMENTAL ORGANISATIONS



COUNTRY MEMBERSHIP IN IGOs

FAO WECAFC

European Union
Guinea
Japan
Korea
Spain

IOCARIBE

UN ENVIRON- MENT CEP

OSPESCA & CCAAT

El Salvador

Costa Rica
Dominican Republic
Guatemala
Honduras
Nicaragua
Panama

CARICOM

Bermuda¹
(UK)

CRFM

Turks &
Caicos¹
(UK)

Belize

Bahamas
Barbados
Guyana
Haiti
Jamaica
Suriname
Trinidad and Tobago



- 1 CARICOM associate members
- 2 OECS associate members
- 3 ACS CSC associate members
- 4 Includes Puerto Rico and US Virgin Islands
- Non CLME+ members in grey

ACS CSC

French Guiana, Guadeloupe,
St. Barthelemy, St. Martin (FR)³

Brazil

Colombia
Cuba
Mexico
Venezuela

Bonaire,
Sint Estatius,
Saba, Curaçao,
Sint Maarten,
Aruba (NL)³

France
Netherlands
United Kingdom
United States of America⁴

OECS

Antigua & Barbuda
Dominica
Grenada
St. Kitts & Nevis
St. Vincent & Grenadines

British Virgin Islands (UK)^{1,2}

St. Lucia^{1,2}
Anguilla,^{1,2}
Montserrat (UK)

Cayman
Islands¹
(UK)

Martinique^{2,3} (FR)

Public

obago

NEED FOR ENHANCED COORDINATION AND SUSTAINABLE FINANCING

While several elements of the CLME+ Regional Ocean Governance Framework are already in place, a regional coordination mechanism is required to address the high level of geographic and sectorial fragmentation. That is why the SAP calls for the establishment of a Permanent Policy Coordination Mechanism (PPCM) for ocean governance for the CLME+ region.

The PPCM is expected to provide policy coordination and oversight for the entire regional ocean governance framework. The PPCM shall perform a set of functions, such as promoting actions, monitoring, documenting, and communicating on fisheries, habitat degradation, and pollution, and facilitating the operations of the RGF by:

- > Facilitating interactions among regional partner organisations
- > Overseeing any revision/evolution of the CLME+ SAP and monitoring and evaluation of its implementation and assisting with SDG initiatives
- > Maintaining a regional data and information website
- > Coordinating the production of technical outputs
- > Ensuring recurrent financing for the PPCM and pursuing funding for cross-cutting activities

In order to fulfil the functions effectively and efficiently, sustainable financing of the PPCM is fundamental. The sustainable financing plan (SFP) of the PPCM needs to be realistic, and to be embedded in a wider plan for sustainable financing of the RGF.

BENEFITS FROM A PPCM AND SFP INCLUDE



Higher impact of policies, programmes and projects on the regional level by working towards common goals and SAP and SDG objectives



More efficient use of resources by maximizing synergies and minimizing duplications in the work of IGOs, countries and other stakeholders



Higher leverage effect for financing and a stronger position toward funding partners through design of joint programmes and projects



More informed decision making and allocation of resources based on timely shared information and knowledge

OPTIONS FOR A PPCM AND SFP

The consultancy **Options for a Permanent Policy Coordination Mechanism and a Sustainable Financing Plan for Ocean Governance in the CLME+ Region** aims to support CLME+ countries and IGOs in the identification, design and selection of the most suitable option for a PPCM, and to develop options for Sustainable Financing Plans for the PPCM, as well as the Regional Governance Framework. This will build on the extensive baseline of work on the governance of fisheries and the marine environment that already exist in the region.

The consultancy will identify and assess governance and financing options based on the respective Strengths, Weaknesses, Opportunities and Threats (SWOT Analysis), as well as in relation to the respective costs and benefits.

THE MAJOR OUTPUTS ARE PROPOSALS FOR:

- > A PPCM with specifications on its constituents, mandate and functions
- > An associated Sustainable Financing Plan for the PPCM
- > A Sustainable Financing Plan for the CLME+ Regional Governance Framework

METHODOLOGICAL APPROACH

INCEPTION PHASE
BASELINE ASSESSMENT
NOV 17 - MAR 18

- > Inception meeting and work planning
- > Background information review and baseline analysis
- > Develop communication material

PHASE 1
DEVELOPMENT & SHORTLISTING OF OPTIONS
MAR 18 - SEP 18

- > Develop a financing plan for current CLME+ governance framework
- > Develop options for a prospective CLME+ governance and financing mechanism
- > Develop Business-as-Usual Scenario & Cost-Benefit Analysis
- > Hold consultations and select shortlist

1ST MAJOR
CONSULTATION MEETING

PHASE 2
FINE-TUNING & SELECTION OF OPTIONS
OCT 18 - APR 20

- > Fine-tune the financing plan for current governance framework
- > Fine-tune options and select a preferred option for the prospective governance and financing mechanism based on consultations
- > Develop roadmap and M&E framework for an integrated and financially sustainable governance framework

2ND MAJOR
CONSULTATION MEETING

ENDORSEMENT OF SELECTED OPTION
FINAL PROJECT STEERING COMMITTEE MEETING
MARCH/APRIL 2020

NEXT STEPS

CLME + countries, ICM members and other key stakeholders will be engaged, from sharing information, participating in consultations, to providing feedback on the proposed options. Their involvement is crucial to ensure that the results of this consultancy have the expected benefits.

KEY MEETINGS

JUNE 2018	SEPTEMBER 2018	JUNE 2019	MARCH 2020
PROJECT STEERING COMMITTEE <i>Present draft options</i>	<i>Review and shortlist options</i>	2ND MAJOR CONSULTATION <i>Select options</i>	PROJECT STEERING COMMITTEE <i>Endorse selected options</i>

INPUTS & ACTIONS REQUIRED

- > Share views regarding a PPCM and its potential funding
- > Provide information on the financing structure and gaps of work related to ocean governance
- > Share ideas for a sustainable financing mechanism of the RGF
Participate in regional meetings
- > Use appropriate forums to discuss the proposed options with their constituents
- > Organise national consultations with relevant stakeholders

CONSULTANT TEAM

COORDINATION

The **Centre of Partnerships for Development** (CAD) is a Barcelona-based consultancy firm with a 10-year track record in the management of projects strengthening cross-sector partnerships for development, promoting inclusive business strategies and contributing to the green economy transition.

CONSULTANTS

A multi-disciplinary team of experts with extensive experience in the CLME+ region and globally, including:

Peter Whalley - Team Leader
Norbert Fenzl - Governance Task Leader
Eduard Interwies - Financing Task Leader
Steffen Schwörer - Team Coordinator

ADVISORY GROUP

Centre for Resource Management and Environmental Studies (CERMES)



Centre of Partnerships for
Development (CAD)
Email: info@globalcad.org
Tel: (+34) 93 495 0383
<http://globalcad.org>

UNDP/GEF CLME+ Project
Coordination Unit
Email: info@clmeplus.org
Tel: (+57) (5) 664 82 92
<https://clmeplus.org>

