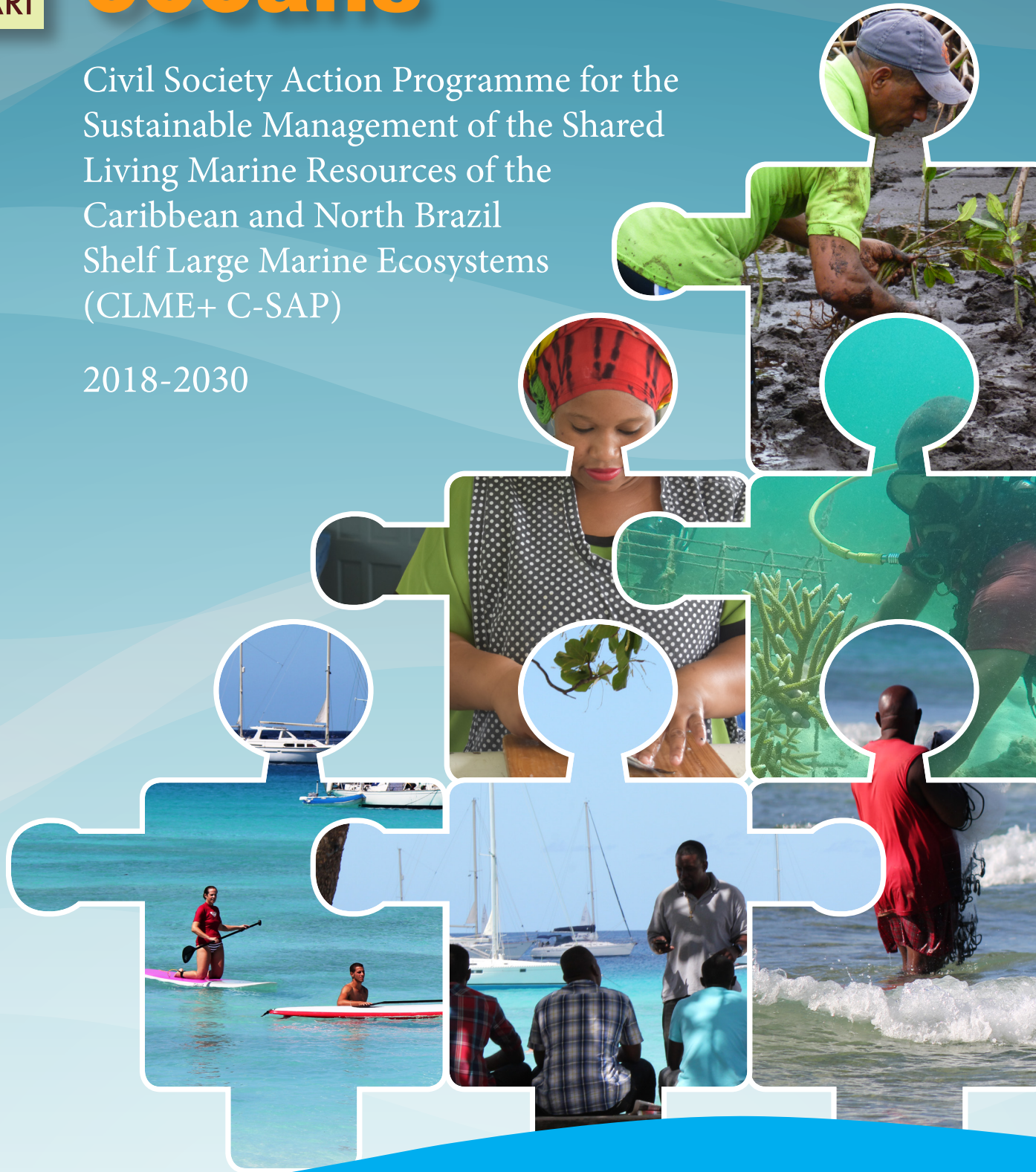




People managing oceans

Civil Society Action Programme for the Sustainable Management of the Shared Living Marine Resources of the Caribbean and North Brazil Shelf Large Marine Ecosystems (CLME+ C-SAP)

2018-2030



Factsheet

Catalyzing Implementation of the Strategic Action Programme for the Caribbean and North Brazil Shelf Large Marine Ecosystems (2015-2018)



Empowered lives.
Resilient nations.



www.theGEF.org



The need

What's happening with the marine ecosystems in the CLME+ region and why should we care?

- Over 100 million people live in the Caribbean and North Brazil Shelf Large Marine Ecosystems region (CLME+ region).
- About 10% of the world's coral reefs, 20% of the world's remaining mangrove forests and at least 25-50% of the world's seagrass beds are located within the CLME+ region.
- The region's marine ecosystems have high levels of biodiversity and support globally important ecological processes.
- The CLME+ region is one of the most geopolitically diverse and complex large marine ecosystems in the world, with 26 independent states and 18 dependent/associated territories.
- The marine environment in CLME+ is of great importance for global and regional tourism, shipping, fishing and oil and gas industries.
- The marine environment of the CLME+ provides a multitude of goods and services that are important for livelihoods, human well-being and sustained socio-economic development.
- The marine ecosystems in the CLME+ region are being impacted by human activities, with 3 critical transboundary issues being (a) unsustainable fisheries (b) habitat degradation, and (c) pollution. Impacts from these problems are made worse by increased climate variability and change.
- The politically endorsed 10-year *Strategic Action Programme for the Sustainable Management of the Shared Living Marine Resources of the Caribbean and North Brazil Shelf Large Marine Ecosystems* (CLME+ SAP) seeks to contribute to a long-term vision of "a healthy marine environment that provides benefits and livelihoods for the well-being of the people of the region."



Map of the CLME+ region

(Source: www.clmeproject.org)



Photo credit: Center for the Conservation and Eco-Development of Samaná Bay and its Surroundings (CEBSE)

A solution

The Strategic Action Programme created for civil society by civil society in the CLME+ region

Civil society is already playing a key role in conservation of the marine environment and development of sustainable livelihoods. In 2018, civil society organisations (CSOs), including fisherfolk organisations (FFOs), and community-based small and micro-enterprises (SMEs) within the CLME+ region committed to strengthening their role in management and governance of marine ecosystems. They developed the Civil Society Action Programme for the Sustainable Management of the Shared Living Marine Resource of the Caribbean and North Brazil Shelf Large Marine Ecosystems (CLME+ C-SAP) to help guide this work.

The objective of CLME+ C-SAP is to contribute to strengthening the role, participation and ownership of civil society actors in the implementation of the CLME+ SAP to achieve the long-term vision for the marine environment in the CLME+ region.

The CLME+ C-SAP:

- provides a framework to guide civil society's participation in implementing the CLME+ SAP for a healthy marine environment that provides benefits and livelihoods for the well-being of the region's population;
- includes 8 strategies and 90 actions, aligned with the 6 strategies of the CLME+ SAP, which highlight the role that CSOs and SMEs can play in CLME+ SAP implementation;
- identifies capacity building requirements needed by CSOs and community SMEs so they can effectively participate with public and private sector actors in governance and sustainable livelihoods development in the CLME+ region.

The actions

What do the Strategies in the CLME+ C-SAP focus on?

The C-SAP, like the CLME+ SAP, focuses on addressing the impacts of the 3 transboundary issues on the reef and associated ecosystems, pelagic ecosystems and the continental shelf ecosystems using ecosystem-based approaches.

Strategies 1-3 are specifically focused on engaging and enabling civil society to contribute to the management of the three key ecosystem types.

Strategy 1: Implement ecosystem-based management of reef and associated ecosystems (e.g. seagrass beds, mangroves, reef slopes and coastal lagoons)

Strategy 2: Implement an ecosystem-based approach for pelagic fisheries

Strategy 3: Implement ecosystem-based management of the Guianas-Brazil continental shelf with special reference to the shrimp and groundfish fishery

Strategies 4 - 7 are overarching Strategies that focus on strengthening civil society's role in participatory governance and management of all three ecosystem types.

Strategy 4: Strengthen civil society's role to conduct and participate in research and monitoring for management of the coastal and marine environment

Strategy 5: Strengthen civil society's participation in governance of the coastal and marine environment



Photo credit: Fondation pour la Protection de la Biodiversité Marine (FoProBiM)

Strategy 6: Develop and enhance livelihoods based on the sustainable use of coastal and marine resources

Strategy 7: Enhance communication to raise awareness and advocate for issues impacting the coastal and marine environment

Strategy 8 addresses the implementation of the C-SAP.

Strategy 8: Facilitate C-SAP implementation, monitoring, evaluation and learning.



Photo credit: CoopeSoliDar R.L

The targets

Who is the CLME+ C-SAP for?

The C-SAP is a guide for both **civil society**, seeking to prioritise and focus its work, as well as **donors, governments, researchers and other partners** who provide financial and technical support to civil society. Together, these contribute to supporting civil society to play an effective role in the governance and management of shared living marine resources in the CLME+ region.

Making it happen

How can CSOs and SMEs support implementation of the CLME+ SAP?

Align your work with the appropriate strategies of the C-SAP

- Incorporate the strategies outlined in the C-SAP in your organisation's strategies, programmes and work plans
- Monitor, evaluate and report on your organisation's work against the strategies and priority actions set out in the CLME+ C-SAP
- Reflect and/or reference the CLME+ C-SAP strategies in your project proposals to donors

Take on-the-ground actions guided by the C-SAP

- Design and implement projects that address relevant priority actions in the CLME+ C-SAP

Get others to support implementation of the C-SAP

- Promote the CLME+ C-SAP among your peers, donors and other partners as a framework for engaging civil society in the implementation of the CLME+ SAP



Photo credit: CoopeSoliDar R.L



Photo credit: Natalie Boodram

Making it happen

How can donors, governments, researchers and other partners support implementation of the CLME+ C-SAP?

Use the C-SAP as a framework

- Use the C-SAP in developing and implementing policies, plans, programmes and projects to support civil society to address priorities for governance and management of marine resources

Get involved with the C-SAP Small Grants Coordinating Mechanism

- Donors can get involved in the mechanism to share information on how they are supporting civil society to implement the C-SAP, with the overall aim of identifying gaps and synergies and sharing results and lessons

To learn more about the CLME+ C-SAP and Small Grants Coordinating Mechanism visit:

<http://www.canari.org/clme-csap>

Or

Contact the **Caribbean Natural Resources Institute** at:

Email: info@canari.org

Phone: 1 (868) 638-6062

This CLME+ C-SAP factsheet was prepared by the Caribbean Natural Resources Institute (CANARI) as an output of the “Engaging Civil Society in CLME+ SAP Implementation” project, which is being executed by CANARI as a component of the United Nations Development Programme (UNDP)/Global Environment Facility (GEF) **“Catalyzing Implementation of the Strategic Action Programme (SAP) for the Sustainable Management of shared Living Marine Resources in the Caribbean and North Brazil Shelf Large Marine Ecosystems” (CLME+ Project, 2015-2020)**

The CLME+ Project is executed by the United Nations Office for Project Services (UNOPS) in close collaboration with a number of global, regional and national-level partners. All are jointly referred to as the “CLME+ Project co-executing partners”.

www.clmeproject.org
info@clmeproject.org



CLME+ Project Co-executing Partners

